

Hamburg Community School District

Public Meeting-5 Year Strategic Plan

Introductions

- ▶ Dr. Mike Wells, Superintendent/Principal
- ▶ Mr. David Mincer, School Board President
- ▶ Mr. Jerry Purdy, Architect from Design Alliance

Feedback & Information Sheets

- ▶ Feedback Forms: Please do not fill these out until each section has been discussed and questions have been answered.
- ▶ After each section we will stop and answer any questions.

Purpose of the Meeting

- ▶ Share our 5 Year Strategic Plan with the public
- ▶ Gather your input about our plans
- ▶ Define our facility needs and solutions

Current Status of our School

- ▶ PreK-8 School in Hamburg
- ▶ Tuition Agreement with Sidney for 9-12 grade education; we transport high school students to and from school.
- ▶ Other high school students open enroll to Shenandoah or Fremont Mills, but they must transport themselves.
- ▶ We are currently offering a comprehensive education in middle school which includes industrial technology (woods/metals), vocational agriculture, and consumer science (home economics).
- ▶ Our current facility has many challenges including lack of storage, no shops, no science labs, and security in/out of the building need to be addressed.
- ▶ Financially, we went from a negative ending balance to a approximately \$400,000 balance at the end of June.
- ▶ We have one of the most robust after school programs in the state of Iowa offering after school activities Monday thru Thursday and in the summer.

How did we correct our financial situation and how can we afford these after school programs?

Line Item Budget

- ▶ Mrs. Kris Wood, and I built a very detailed line item budget which helped us control all of our expenditures-Every penny was accounted for.
- ▶ We worked hard writing grants and received over \$650,000 last year in new funds.
- ▶ Our staff has only ordered what they really need and have done a great job sharing resources.
- ▶ We reduced employees and combined jobs. We will continue doing this as we move forward.
- ▶ School Board is keeping a close eye on all expenditures and requiring more financial reporting to them and the public.

Status of the Old Middle School/Administration Building/Shop

- ▶ Farragut and Hamburg were placed on a Phase II Plan.
 1. Each school submitted a plan to correct financial problems and improve student learning.
 2. These plans must be followed to the “t” or the state would close the school.
 3. Part of our plan was to close the old middle schools because it was not ADA compliant, and the administration/shop as a cost saving measure.
 4. Middle School students were moved to Farragut.
 5. Hamburg followed our plan and received full accreditation July 1, 2016.
 6. Farragut was unable to follow their plan and were closed.

- ▶ We asked the state about reopening the middle school, administrative building and shop and they informed us this would be in violation of the plan WE SUBMITTED which means we would be starting over and back on Phase II.
- ▶ The state said they would not let us reopen those buildings.
- ▶ The Iowa Department of Education has the final say on this matter.
- ▶ We also contacted our school attorney who responded in writing and agreed with the state’s position. In other words, the state has the final say on the issue and the district has no legal recourse.

What happens to the Middle School, Administration, and Shop?

- ▶ We will have an auction this spring to get rid of all the contents of the building.
- ▶ The Old Middle School would be placed on the market to be sold.
- ▶ The shop would be placed on the market to be sold.
- ▶ We are still exploring options for the administration wing. We are collaborating with a local group to partner and open a community grocery store. The group is pursuing a 501c3 non profit status.

Questions on the old middle school, shop, administrative building or our current status?

Strategic Planning Process

- ▶ 35 people (community members, teachers, support staff, administrators, board members, and students) worked last year on creating a 5 Year Strategic Plan (2016-2021)
- ▶ Plan is a detailed roadmap of where we are heading as a school district
- ▶ In each section there is an action plan telling the public what we are going to do, who is responsible to accomplish the task, and how we will pay for it.

We started with developing our school's belief statements, mission statement and visioning statement.

Belief Statements

BELIEF STATEMENTS

We believe . . .

- ▶ All decisions (we make) will be based on what is best for students.
- ▶ Our school will be a World Class School and will offer a World Class Education for ALL students
- ▶ Our school is a quality facility for students to learn and teachers to teach.
- ▶ Our school is a respectful, loving, safe, and compassionate environment.
- ▶ Students can discover the leader within.
- ▶ High expectations, accountability, and appropriate discipline to lead to high achievement in and out of the classroom.
- ▶ A quality education is a shared responsibility that is achieved through meaningful collaboration among staff, students, families and community members.

Mission Statement

MISSION STATEMENT

THE MISSION OF THE HAMBURG COMMUNITY SCHOOL DISTRICT IS TO EMPOWER
STUDENTS TO BECOME INTELLECTUAL EXPLORERS

Vision Statement

The Hamburg Community School District will create an environment dedicated to empowering all students to achieve individual excellence. The vision will be supported by:

- ▶ Outstanding Facilities
- ▶ Strong Community Partnerships
- ▶ Financial Stability
- ▶ Excellent Teaching & Quality Learning
- ▶ Cutting Edge Innovation & Research
- ▶ 21st Century Technology
- ▶ Healthy Nutritional Programming
- ▶ Safe & Quality Transportation
- ▶ Student Learning & Opportunities
- ▶ System Accountability

Parts of the Strategic Plan

The background of the slide is white with abstract blue geometric shapes on the right side. These shapes include overlapping triangles and polygons in various shades of blue, ranging from light sky blue to dark navy blue. The shapes are layered, creating a sense of depth and movement.

Part I: Teaching & Learning

▶ Preschool

Recommendations:

Relocate our preschool to the George C. Grape Hospital facility.

Start a daycare at the same location so our families have quality service.

Implement Outdoor Education Program

Apply for Wrap Around Funding to help offset the cost of the daycare.

Cont. Teaching & Learning

VOCATIONAL AGRICULTURE

▶ Recommendations:

1. Create/operate a Farm School
2. Start Middle School FFA
3. Develop “Fremont County Certified Community Kitchen”
4. Implement Greenhouse Program (Grant Funds)
5. Implement 4H Boys/Girls Club, and Garden Club as “afterschool”
6. Plant a small tree orchard to support our nutritional program

Cont. Teaching & Learning

WORLD LANGUAGE

RECOMMENDATIONS:

Continue K-5 Spanish

- ▶ Add Middle School Spanish
- ▶ Expanding Language Program to include online Chinese, German, French (possible teacher exchange program from those countries)-Middle School
- ▶ Summer Student Exchange Program (One summer students from another country come to American and live with our students, the following summer our students go over there and live with their families for two weeks)-IMMERSION

Cont. Teaching & Learning

SPECIAL EDUCATION

RECOMMENDATIONS:

- ▶ Create a two year masters program with Northwest Missouri State for graduate studies in Special Education (Sept. 2 meeting @NWMS)
- ▶ Create a K-8 Behavioral Disorder Program (The cost of sending students out of our district is more than creating our own program. If we develop our own program we can generate funding for our school)
- ▶ Bottom line-A student from Hamburg shouldn't be on the road for two hours a day to go to school.

Cont. Teaching & Learning

LITERACY

RECOMMENDATIONS:

Continue implementing Path to Reading Excellence in School Sites (PRESS-University of Minnesota)

- ▶ Continue being part of the Iowa Department of Education Differentiated Accountability Pilot Program.
- ▶ Implement K-8 Summer Enrichment Camp
- ▶ Create & protect 90 minute K-5 reading block
- ▶ Implement the Formative Assessments System for Teachers (FAST)

Cont. Teaching & Learning

TEACHER LEADERSHIP AND COMPENSATION

RECOMMENDATIONS:

- ▶ We received TLC grant \$76,000 per year for this work.
- ▶ Hire/maintain an K-8 instructional coach (Mrs. Barrett)
- ▶ Provide leadership roles in the district on SIAC, data teams, and professional development.

Cont. Teaching & Learning

Science Technology Engineering and Mathematics (STEM)

RECOMMENDATIONS:

- ▶ Apply, receive and implement HyperStream
- ▶ Apply/begin Project Lead the Way
 - 2016-2017 Design & Modeling and Automation & Robotics
 - 2017-2018 Intro to Computer Science 1 & 2 and Flight & Space
 - 2018-2019 Energy & Environment and Science of Technology
 - 2019-2020 Magic of Electrons and Green Architecture
 - 2020-2021 Medical Detectives
- ▶ After School Clubs (21st Century Grant) Lego League, Science Olympiad, Math & Science Quiz Bowls,

Leader in ME

Train staff/students in the *Leader in Me*-7 Habits of Highly Effective People

Habit #1 Be Proactive-The habit of personal responsibility

Habit #2 Being with the End in Mind-The habit of personal vision

Habit #3 Put First Things First-The habit of personal management

Habit #4 Think Win Win-The habit of mutual benefit

Habit #5 Seek First to Understand then to be Understood-The habit of empathic communication

Habit #6 Synergize-The habit of creative cooperation

Habit #7 Sharpen the Saw-The Habit of Daily Self-Renewal

Questions on the Teaching & Learning
section?

The background features abstract, overlapping geometric shapes in various shades of blue, ranging from light sky blue to dark navy blue. The shapes are primarily triangles and polygons, creating a dynamic, layered effect on the right side of the slide.

Part II: Advanced Technology

RECOMMENDATION:

- ▶ One to one Chromebook grades K-3
- ▶ One to one laptops grades 4-8
- ▶ Remodel all classrooms and make them Integrated Learning Classrooms.
- ▶ Professional Development in technology for all staff members

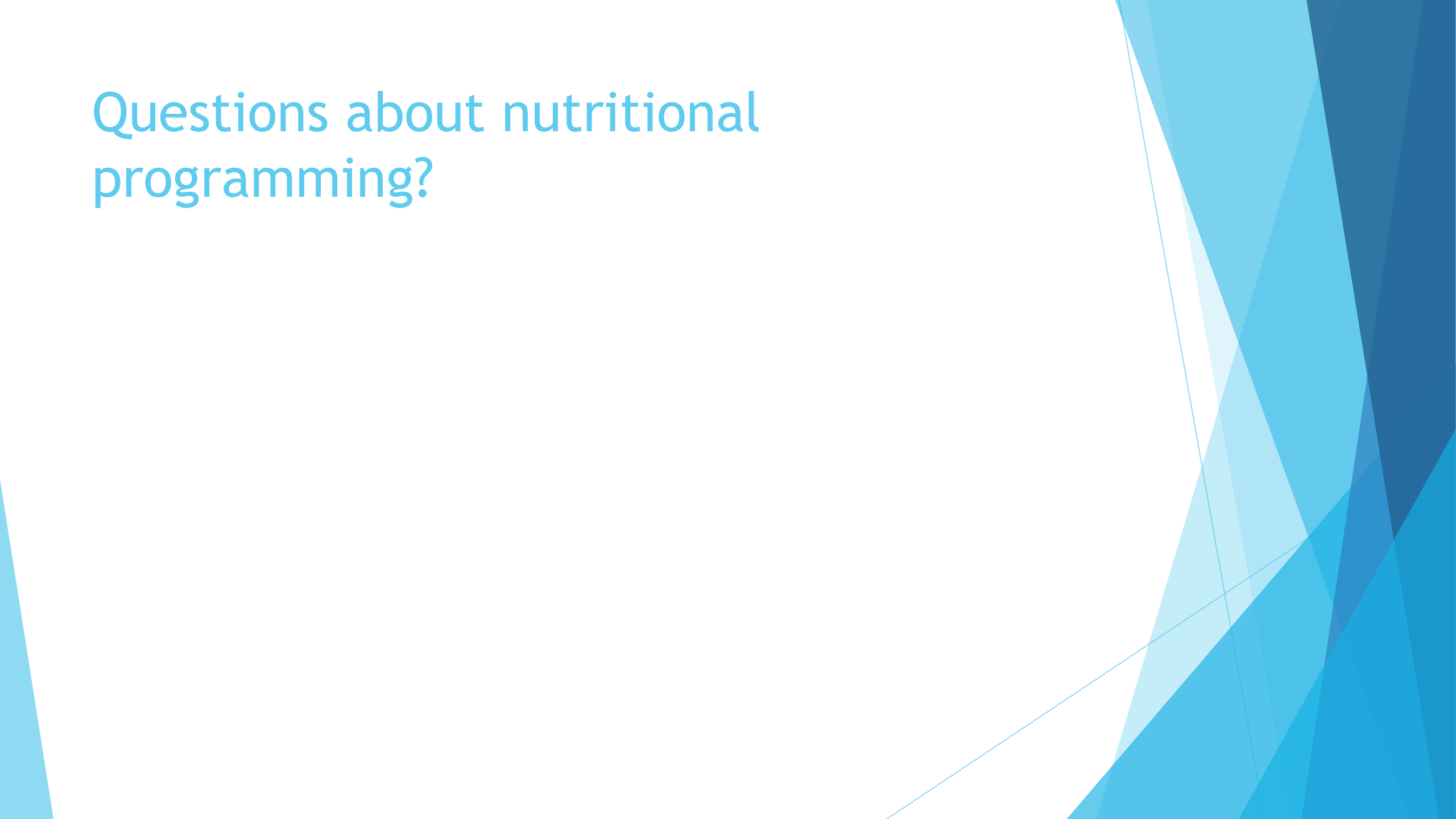
Questions about technology?

Part III: Nutritional Program

RECOMMENDATIONS:

- ▶ Year #1: One baked good each week, salad bar for grades 4-8, and water pitchers on all lunch tables, and start Iron Chef Program.
- ▶ Year #2: Food from Scratch and explore family style meals.

Questions about nutritional programming?



Part IV: Support Activities

Recommendations:

- ▶ Expand After School Clubs
- ▶ Math/Science Quiz Bowls
- ▶ Expand # of teams in Lego League
- ▶ Expand # of teams in Science Olympiad
- ▶ Start First Tech Challenge (upper Lego League)
- ▶ Take Group to World Food Challenge
- ▶ Fall Drama Play/Spring Musical
- ▶ Scuba Diving Program
- ▶ Middle School Trip to Washington D.C./Philadelphia (every other year)
- ▶ Offer students a wide variety of sports i.e. lifetime-football, volleyball, cross country, wrestling, track, tennis, golf, soccer, baseball, softball

Questions about activities?

Part V: Community Partnerships

RECOMMENDATIONS:

- ▶ Adult Classes (Fall 2016)
- ▶ Share Operational Sharing (\$100,000)
- ▶ Day care (Hospital)
- ▶ Grocery Store (City/Hometown Pride)
- ▶ Tennis Court Renovation
- ▶ Public Education Recreational Levy
- ▶ Monthly Bus Trips for elderly in our community for shopping i.e. Walmart

Questions about community
partnerships?



Part VI: Communication & Marketing

RECOMMENDATIONS:

- ▶ Write a Crisis Manual (2016)
- ▶ Monthly Radio Show
- ▶ Utilize District Emergency/communication mass communication available through JMC
- ▶ Create a Marketing Plan which has video of our programming (Get the word out!)
- ▶ “Push Out” info about the school via Facebook, twitter, ect.
- ▶ Ask for a page in the Hamburg Paper for school stories/happenings.
- ▶ New Website
- ▶ Quarterly Community Meetings to talk about the school (forums)

Questions about communication and marketing?

Part VII: Research & Innovation

- ▶ Farm School (Northwest Missouri State University)
- ▶ Integrated Learning Classrooms-ILC (Northern Iowa University)
- ▶ Pathways to Reading Excellence in School Sites-PRESS (Univ. of Minnesota)
- ▶ Classroom Supports in Reading (Northwest Missouri State University)

Questions about Research & Innovation?

The background features abstract, overlapping geometric shapes in various shades of blue, ranging from light sky blue to deep navy blue. These shapes are primarily located on the right side of the frame, creating a modern, dynamic aesthetic.

Part VIII: Transportation

- ▶ We have enough busses to last us for 5 years.
- ▶ Reduce the number of routes (from 4 to 2)
- ▶ Vans have a great deal of mileage but, we have plenty of them.

RECOMMENDATIONS:

- ▶ Purchase one new van (special education funds) for the Glenwood/Omaha Route
- ▶ Purchase a used truck and blade and do our own snow removal
- ▶ Sell the 1994 Ford Truck (white) and 1992 Ford Van (out of commission)

Questions about Transportation?

Part IX: Finance

RECOMMENDATIONS:

2016-2017 \$200,000 ending unspent balance; minimum of \$200,000 ending cash

2017-2018 \$400,000 ending unspent balance; minimum of \$400,000 ending cash

2018-2019 \$600,000 ending unspent balance; minimum of \$600,000 ending cash

2019-2020 \$800,000 ending unspent balance; minimum of \$800,000 ending cash

2021-2022 \$1,000,000 ending unspent balance; minimum of \$1,000,000 ending cash

Current Financial Position

2016-2017 Goal: \$200,000 unspent authority, and \$200,000 cash

2015-2016 Actual: \$394,147.57 unspent authority, and \$1,2 million cash

We will continue to reduce expenditures where we can and keep overhead costs i.e. administrative costs as low as possible.

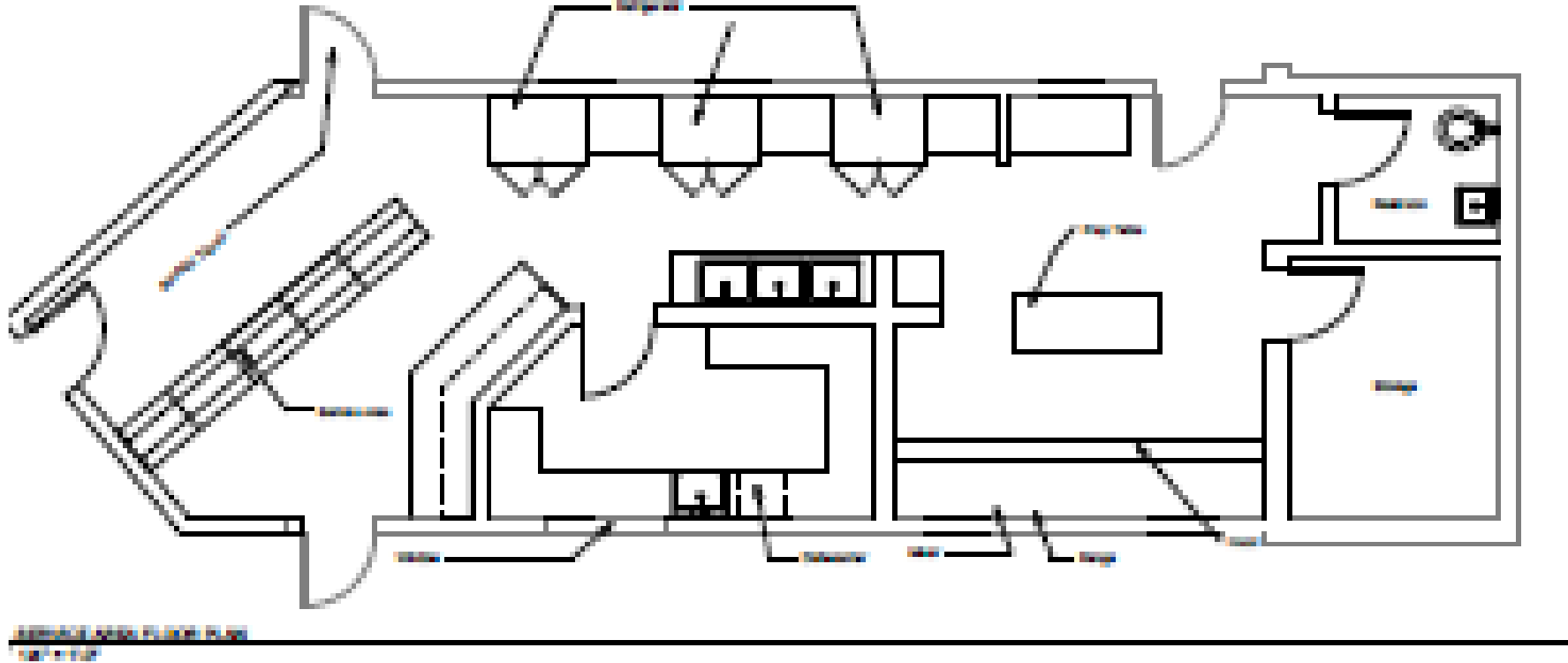
Part X: Facilities-Why do we need an addition?

1. Marnie Simons is an elementary building and is constructed in such a manner. It lacks science labs, shops, and storage.
2. Currently, we are doing our wood/metals class outside and in the art room. This is fine when the weather is good but what do we do when it is cold outside. It limits the curriculum Mr. Duval can offer and takes away from students reaching their full potential.
3. Vocational Agriculture-we will be erecting a greenhouse this year which will provide space for the hands on portion of the program but we do not have spare classrooms for this course.
4. Consumer Science is using a converted classroom but a lab needs to be created.
5. Middle School Science incorporates laboratory work for students. We do not have a science lab.
6. Project Lead the Way-is our new middle school engineering program and they need space to leave projects they are building.
7. Safe and secure entries into our building is a major concern. Currently the office cannot see who enters or exits the building.
8. We need office space for our guidance counselor, principal, AEA staff, and we need private meeting rooms to meet with parents.
9. A defined entry/parking. Also, the semi-truck traffic is a concern.

Phase I: Facilities

- ▶ Phase I-Facilities-use cash on hand to develop a first class kitchen facility.

Marnie Simons Kitchen



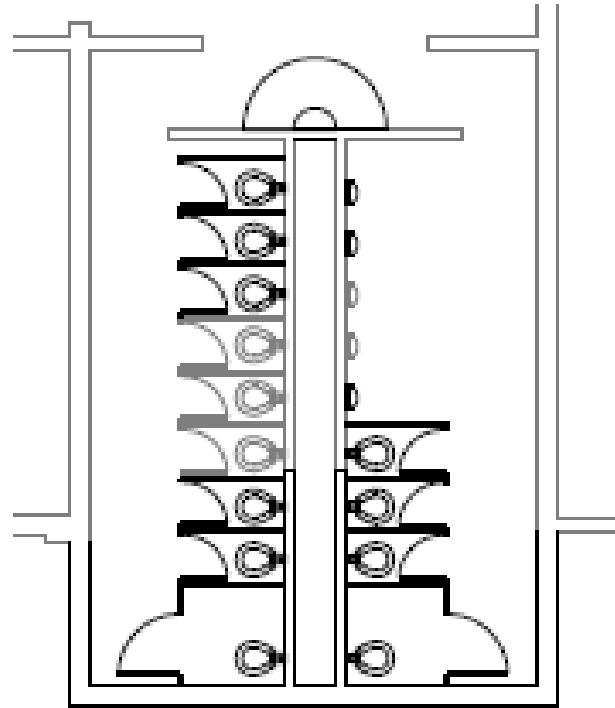
Cont. Phase I

- ▶ Provide an ADA compliant bathroom in the elementary wing of the school. Eliminate “shower curtains” and provide students with privacy.

Cont. Phase I

- ▶ Integrated Learning Classroom (ILC) which is a high tech room in 4th grade.

Bathroom



Phase II: Classroom Renovations/Secondary Addition

1. As part of Phase II, we would like to renovate every classroom in our building.
2. New desks and equipment
3. New lights
4. Add technology
5. New flooring
6. Paint

Secondary School Addition

- ▶ Mr. Jerry Purdy, Design Alliance

Local School Tax Rates

▶ Clarinda	\$10.56
▶ Sidney	\$13.73
▶ Shenandoah	\$14.75
▶ Glenwood	\$13.74
▶ Fremont-Mills	\$11.89
▶ Villisca	\$16.43
▶ Hamburg	\$11.68
▶ Stanton	\$11.98
▶ Essex	\$14.32

If we passed a referendum our tax rate would be a maximum of \$14.38

How much would this cost me?

► You have handouts of this information.

Year	100% Value of Home	Rollback	Taxable Value	Levy	School Tax	Difference
2016-2017	\$50,000	55.7335%	\$27,867	\$11.68487	\$326	
2017-2018	\$50,000	55.7335%	\$27,867	\$14.38487	\$401	\$75 per year \$6.25 month
2017-2018	\$60,000	55.7335%	\$33,440	\$14.38487	\$391 / \$481	\$90 per year \$7.50 per mo.
2017-2018	\$70,000	55.7335%	\$39,013	\$14.38487	\$456 / \$561	\$105 per year \$8.75 per mo.
2017-2018	\$80,000	55.7335%	\$44,587	\$14.38487	\$520 / \$641	\$121 per year \$10.08 per m.
2017-2018	\$90,000	55.7335%	\$50,160	\$14.38487	\$586 / \$722	\$136 per year \$11.33 per m.
2017-2018	\$100,000	55.7335%	\$55,734	\$14.38487	\$651 / \$802	\$151 per year \$12.58 per m.

What would it cost my business?

YEAR	100% Value of Business	Rollback	Taxable Value	Levy	School Tax	Difference
2016-2017	\$100,000	90%	\$90,000	\$11.68487	\$1052	
WITH A \$2.70 REFERENDUM						
2017-2018	\$100,000	90%	\$90,000	\$14.38487	\$1294	Increase: \$242 per year OR \$20.16 per Month

What would it cost a farmer?

YEAR	100% Value	Rollback	Taxable Value	Levy	School Tax	Difference
2016-2017	\$240,000	46.1068%	\$110,656	\$11.68487	\$1293	
WITH A \$2.70 REFERENDUM						
2017-2018	\$100,000	90%	\$110,656	\$14.38487	\$1591	Increase: \$298 per year OR \$24.83 per Month About \$7.50 per acre

Benefits of updating facilities

- ▶ Quality school that is attractive for families/students.
- ▶ Great facilities will help maintain current students remaining in our district and will encourage open enrollment into our school.
- ▶ Improves school and community pride.
- ▶ 50 year solution to our building problems
- ▶ Maintaining our enrollment will help us sustain local businesses
- ▶ Quality schools help with business recruitment
- ▶ Public Education Recreational Levy (PERL) allows for adult classes to be in our improved facilities i.e. Yoga classes, Dave Ramsey's Financial Peace, Adult Basketball/Volleyball etc.
- ▶ Great facilities for our staff to work in allows us to retain quality educators.

Questions about our Facilities

The background features abstract, overlapping geometric shapes in various shades of blue, ranging from light sky blue to dark navy blue. These shapes are primarily located on the right side of the slide, creating a modern, layered effect. The rest of the slide is a plain white background.

Please fill out the Public Input form and leave it on the table.

If you have additional questions you can write it on that form and I will get back to you.

If you would like an exact cost for you, fill out your address and I will have the county auditor figure your exact taxes on a referendum.

THANK YOU FOR COMING!